



GAT MONTHLY MEMBERSHIP PROGRESS REPORT

Results as of: 5/31/2022

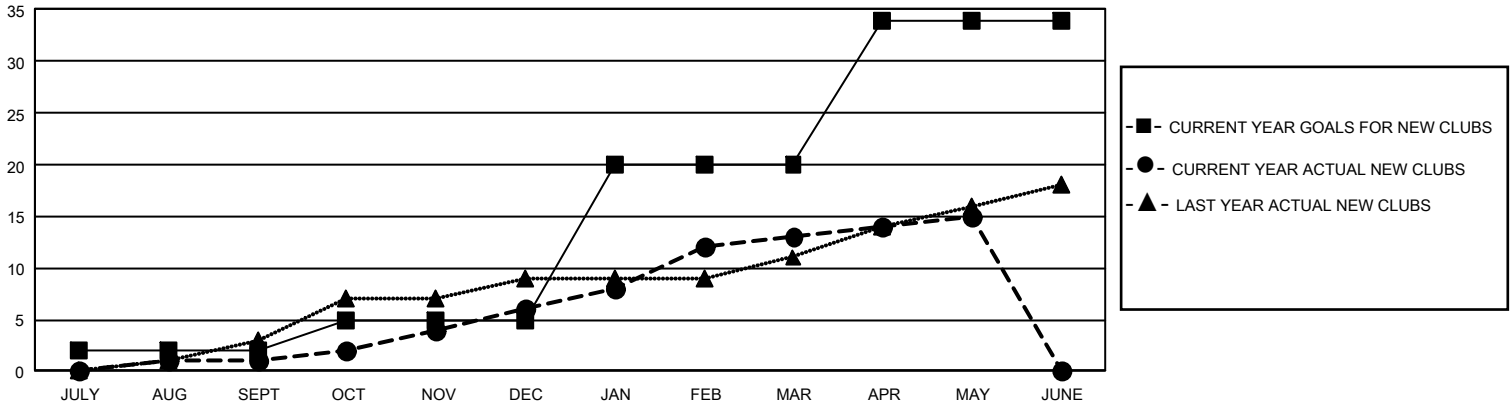
GMT Constitutional Area 4, Group E

REPORT DOES NOT INCLUDE CLUBS IN UNDISTRICTED AREAS.

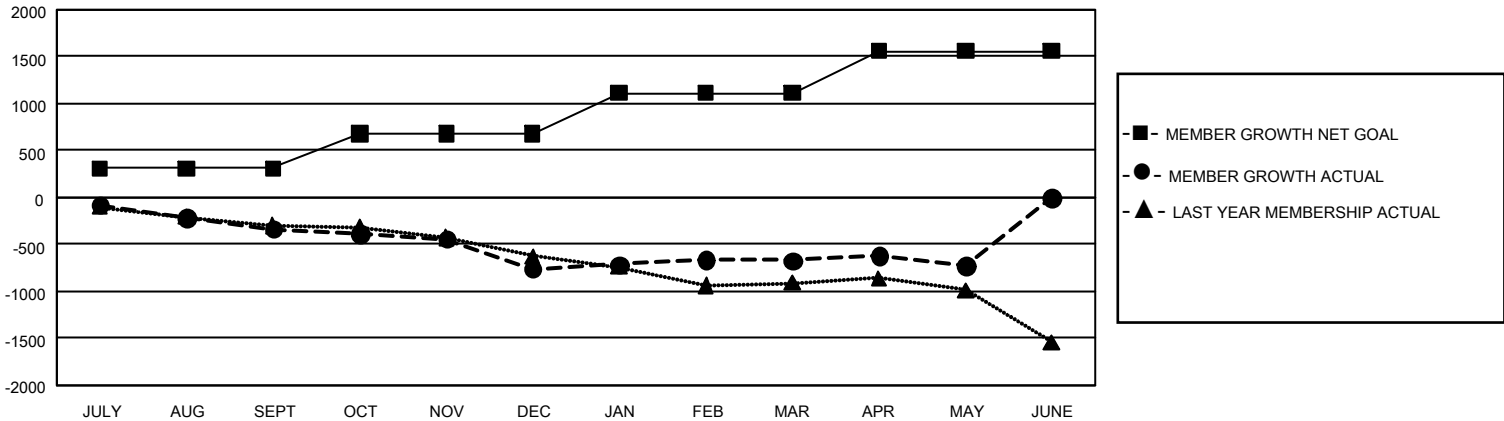
| Clubs | | | |
|-----------------------|---------------|-----------|---------------|
| RESULTS FOR 2021-2022 | | | |
| QUARTER | NEW CLUB GOAL | NEW CLUBS | DROPPED CLUBS |
| JULY/AUG/SEPT | 6 | 1 | 18 |
| OCT/NOV/DEC | 9 | 5 | 4 |
| JAN/FEB/MAR | 45 | 7 | 7 |
| APR/MAY/JUNE | 42 | 2 | 2 |

| Members | | | |
|-----------------------|------------------------|----------------------|--|
| RESULTS FOR 2021-2022 | | | |
| QUARTER | MEMBER GROWTH NET GOAL | MEMBER GROWTH ACTUAL | DROPPED MEMBERS ACTUAL (including transfers) |
| JULY/AUG/SEPT | 309 | 448 | 693 |
| OCT/NOV/DEC | 367 | 749 | 1,022 |
| JAN/FEB/MAR | 437 | 964 | 761 |
| APR/MAY/JUNE | 450 | 505 | 505 |

GOALS AND ACTUAL NEW CLUBS CUMULATIVE



GOALS AND ACTUAL MEMBERS CUMULATIVE



| | | | |
|---|--|---------------------------------|-----------------|
| DROPPED CLUBS: 31 | 795 CLUBS OF 1,578 ADDED 1 OR MORE NEW MEMBERS | <u>GENDER DISTRIBUTION</u> | |
| | | MALE | 24,631 (74.87%) |
| <u>DROPPED MEMBERS</u> | | FEMALE | 8,269 (25.13%) |
| | | NON BINARY | 0 (0.00%) |
| DECEASED | | 360 | |
| CLUB CANCELLED | | 164 | |
| OTHER | | 2,456 | |
| TOTAL | | 2,980 | |
| CLICK HERE FOR CUMULATIVE MEMBERSHIP DATA | | TOTAL FAMILY UNIT MEMBERS | 1,419 |
| | | FAMILY MEMBERS PAYING HALF DUES | 720 |